

LET'S ROLL IN 2021

Cycle St. Louis partners are excited to begin ramping up opportunities and activities for individuals with disabilities (see full list of partners below). While the safety of our participants, their families and supporters is of primary concern, each individual and family should assess their personal risk of participating. Be safe and take applicable precautions based on your situation.

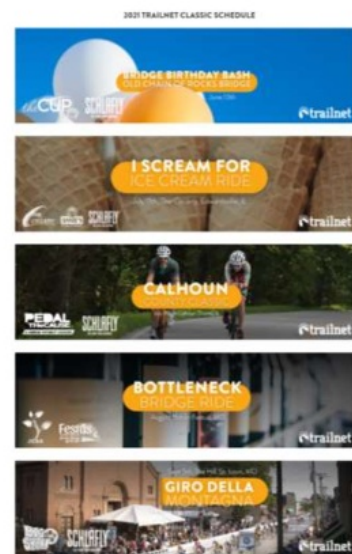
Trailnet Rides Accomodate Cycle St. Louis Participants

Trailnet is offering Cycle St. Louis participants (riders & assistants) FREE rides, upfront parking, and modified short routes with turnarounds for their in-person rides in 2021.

Two perfect (flat, fun and safe) upcoming rides are:

1. **Bridge Birthday Bash**, June 13 at the Chain of Rocks, MO side parking lot
2. **I Scream For Ice Cream**, July 11 at the Cyclery in Edwardsville, IL

For FREE Trailnet ride code please email **Cycle St. Louis**, then register at the links provided for each ride. Cycle St. Louis and Trailnet will work with you to make sure your needs are met. Come ride with us!



Gateway Cup Ride to Unite

The [Gateway Cup Ride to Unite](#) is scheduled for **Saturday, September 4th** at Francis Park. More information is coming soon but plan for an safe and exciting ride on the race course with some of the the best local and national racers.



Cycle St. Louis Partners

- Big Shark Bicycle Company
- Children's Hospital St. Louis – Cerebral Palsy Sports & Sports and Rehabilitation Center
- Delta Gamma Center
- Gateway Tykes on Trykes
- Kids Enjoy Exercise Now (KEEN)
- Missouri Families for Effective Autism Treatment (MO-FEAT)

- St. Louis Arc
- St. Louis County Parks
- Ranken Jordan Pediatric Hospital
- Recreation Council of Greater St. Louis
- Special Olympics Missouri
- Team Activities for Special Kids (TASK)
- Trailnet

We all ride the same road.
Thanks for your patience as we slowly & safely resume activities.

[Cycle St. Louis Website](#)



[Email Us Today](#)

[Donate Now](#)